

DURABILITY

REPEATABLE RESULTS

"Introducing the Anderson Mega™ Series Expeller® Press"

The Anderson International Mega 200



The new millenium
needs a new Expeller®
for the vegetable oil industry.

Features:

- **Variable speed feeder**
- **Integral gear case and thrust case**
- **V-belt drive**
- **Hydraulic cone choke**
- **PLC controls**



**ANDERSON
INTERNATIONAL
CORP**

6200 Harvard Avenue, Cleveland, Ohio 44105 U.S.A.
Ph - (216)641-1112 FAX - (216)641-0709 or (216)641-1571
Website - <http://www.andersonintl.com>

Expeller® is the registered trademark of Anderson International Corp

• Registered in U.S.A. and other countries

Anderson Specifications

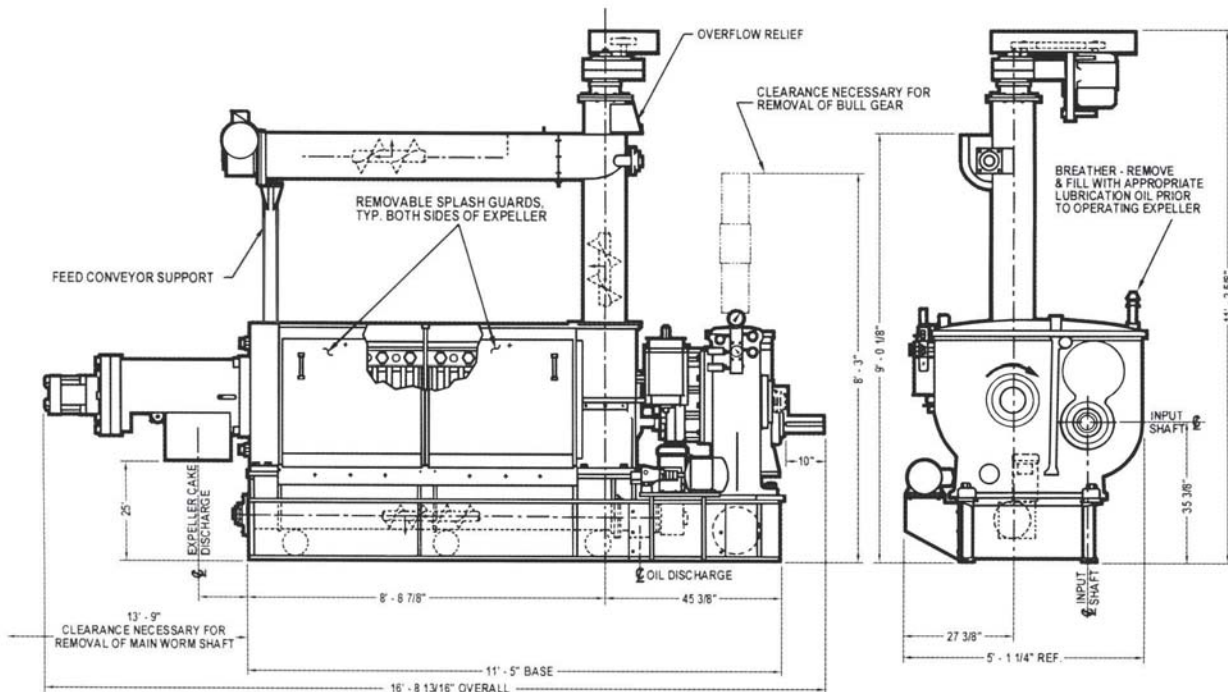
Application.....Prepress

Horizontal Drive: 200 HP, 62 rpm, 1.5 Gear Case Safety Factor
 Horizontal Barrel: 66" x 12" I.D. (1,680 mm x 305 mm)
 L/D Ratio: 5.5
 Total Drainage Area: 2,680 square inches (17,290 cm²)
 Overall Length: 17' - 0" (5,182 mm)
 Height: 6' - 0" (1,828 mm excluding feeder and feed chute)
 Width: 4' - 0" (1,220 mm)
 Approximate Weight: 26,000 lbs. (11,800 kg)
 Export Gross Weight: 30,000 lbs. (13,600 kg)
 Export Volume: 450 cubic feet (12.7 cubic meters)
 Connected Power: 200 HP
 Power Consumption: 155 HP nominal (114 KW)
 Feed Rate: Rates given in metric tons per day, see table below.
 Residual Oil: See table below.

Prepress Capacities...Mega 200

	<u>Feed Rate</u>	<u>Residual Oil</u>
Canola	200-210 MT/D	16-20%
Peanut Kernels	175 MT/D	16-20%
Rapeseed	200-210 MT/D	16-20%
Safflower Seed (cracked)	200-210 MT/D	16-20%
Whole Sunflower (cracked)	200-210 MT/D	16-20%

Many materials not listed above can also be processed. Contact Anderson International for details.



Anderson International Corp, 6200 Harvard Avenue, Cleveland, Ohio 44105-4896 U.S.A.
Phone: (216) 641-1112 FAX: (216) 641-0709 or (216) 641-1571 Website: <http://www.andersonintl.com>